



Gobierno de La Rioja

Agricultura, Ganadería y Medio Ambiente



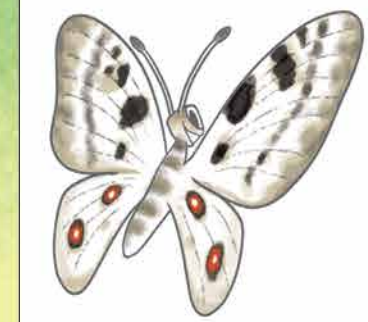
PERDIZ PARDILLA



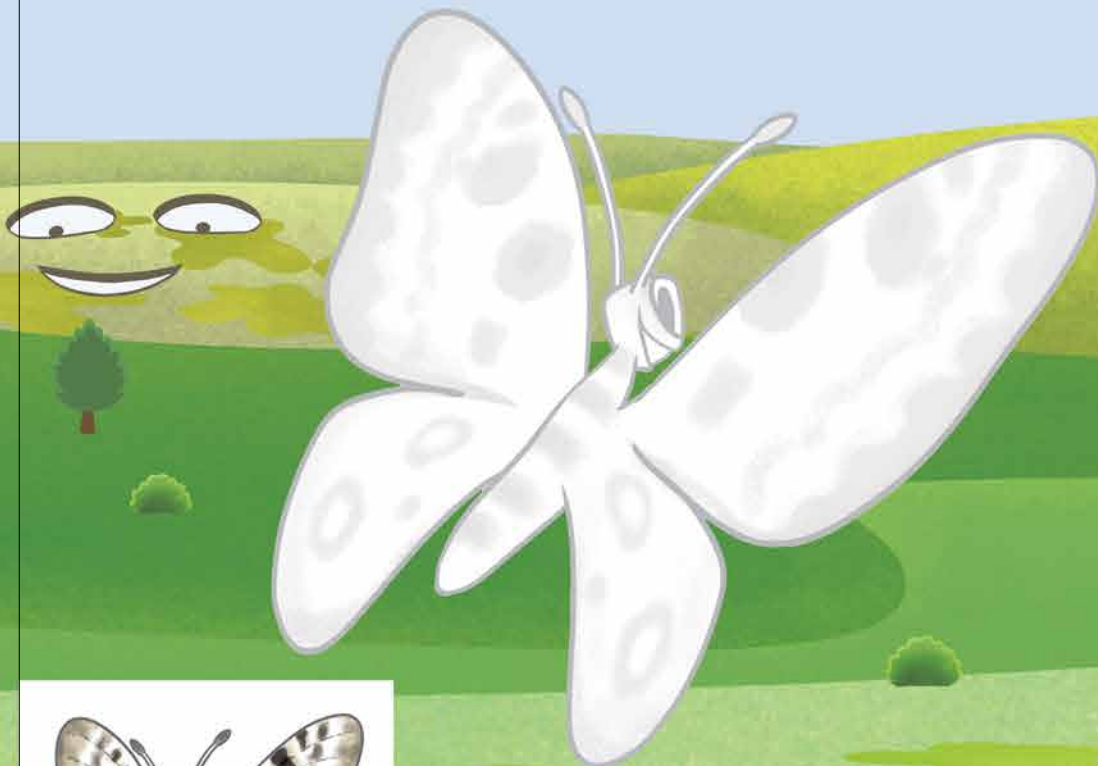
Ilustraciones: Pedro Espinosa Dep. Legal LR



RANITA DE SAN ANTONIO



MARIPOSA APOLO



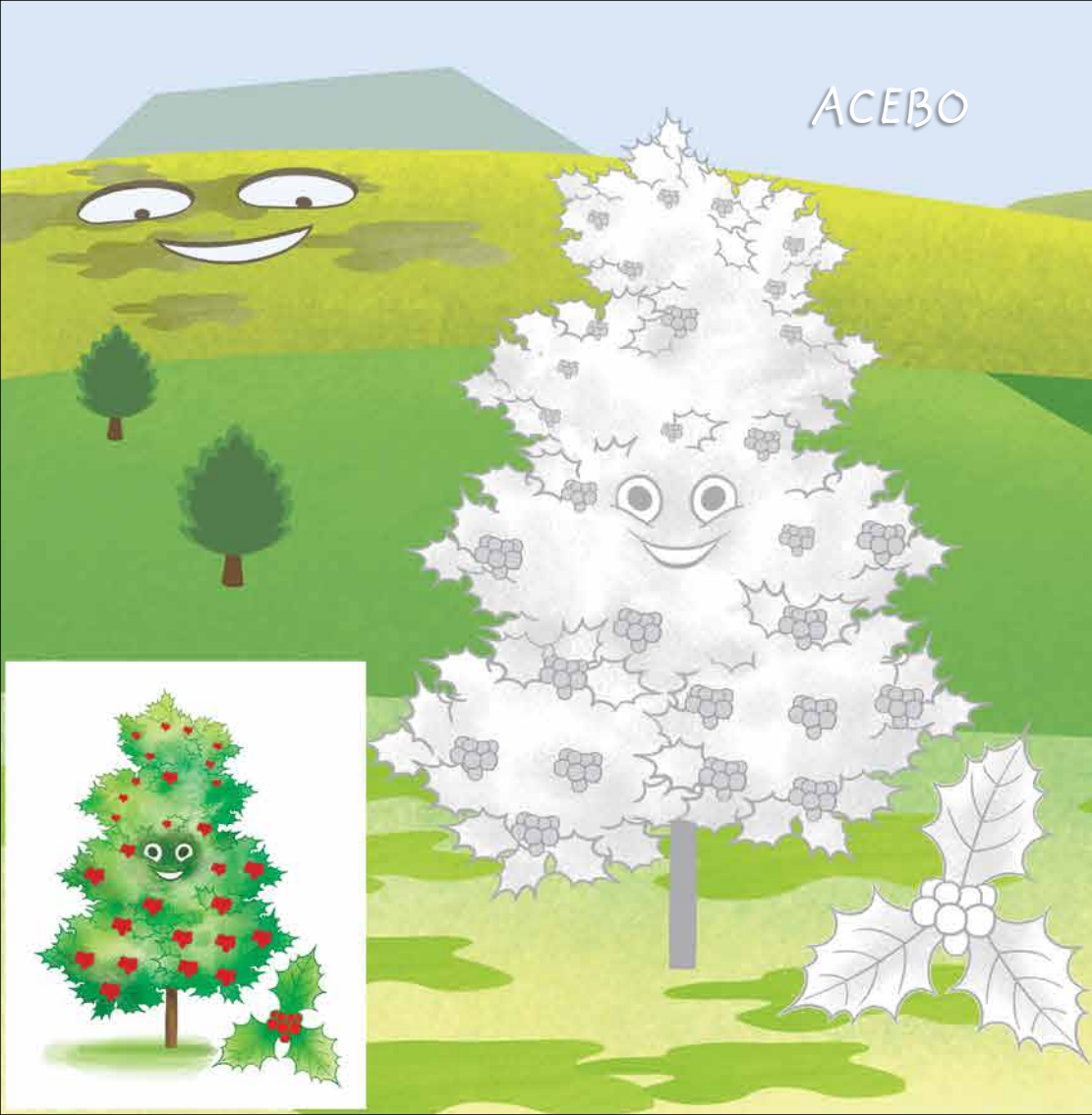
CORZO

PARQUE NATURAL SIERRA DE CEBOLLERA
COLORÉAME



20 años

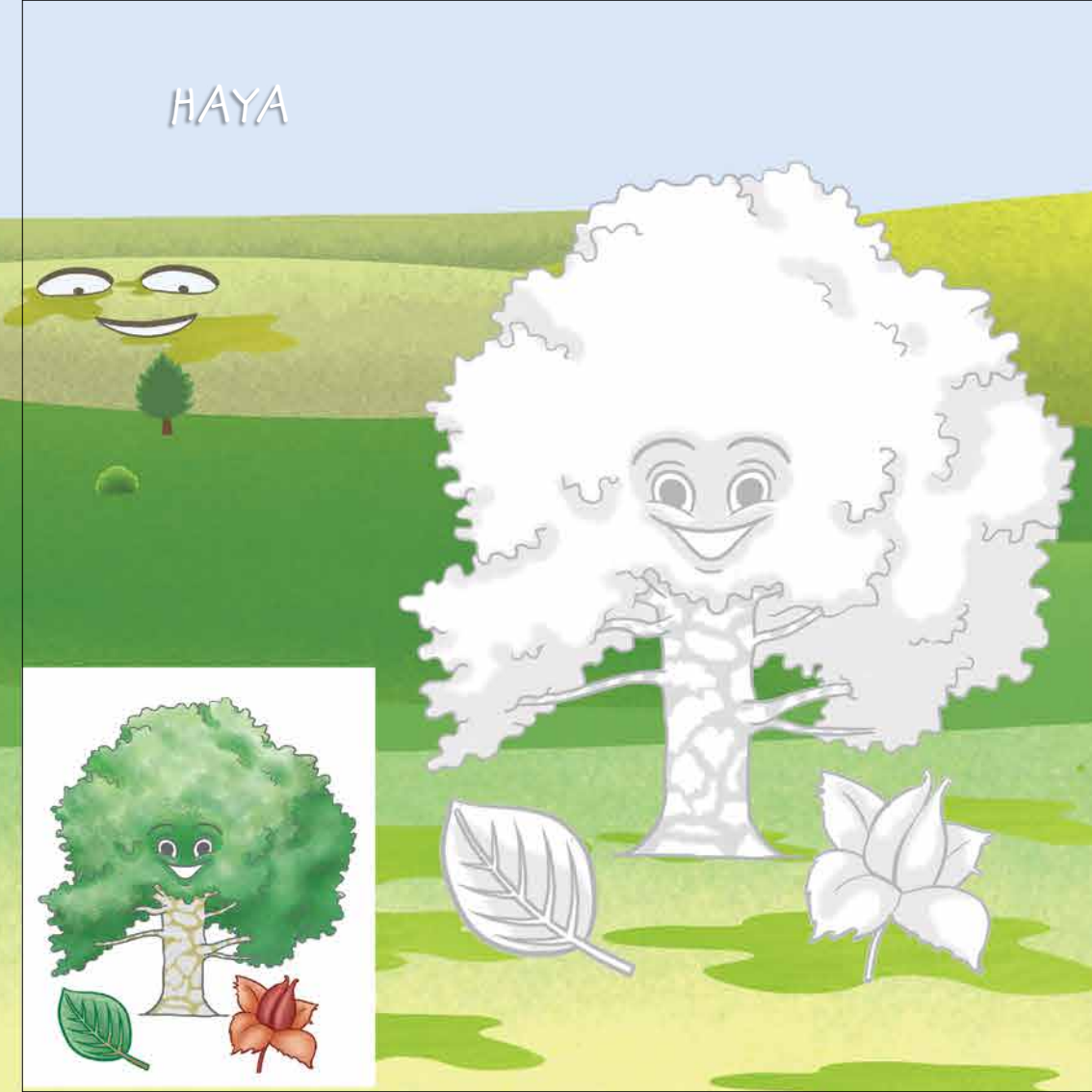
ACEBO



PINO SILVESTRE



HAYA



ROBLE

