

Índices bioclimáticos de la vid

Servicio de Producción Agraria

SIAR

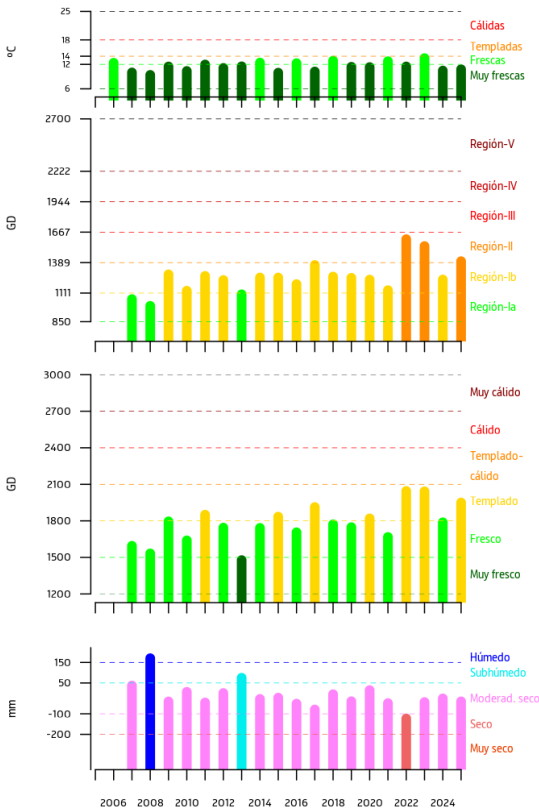
Diciembre de 2025



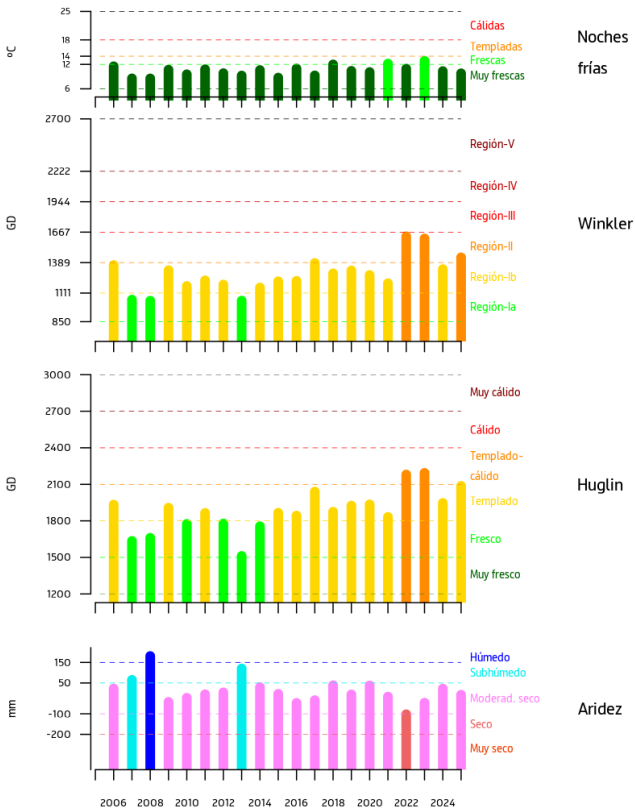
La Rioja

1 Rioja Alta

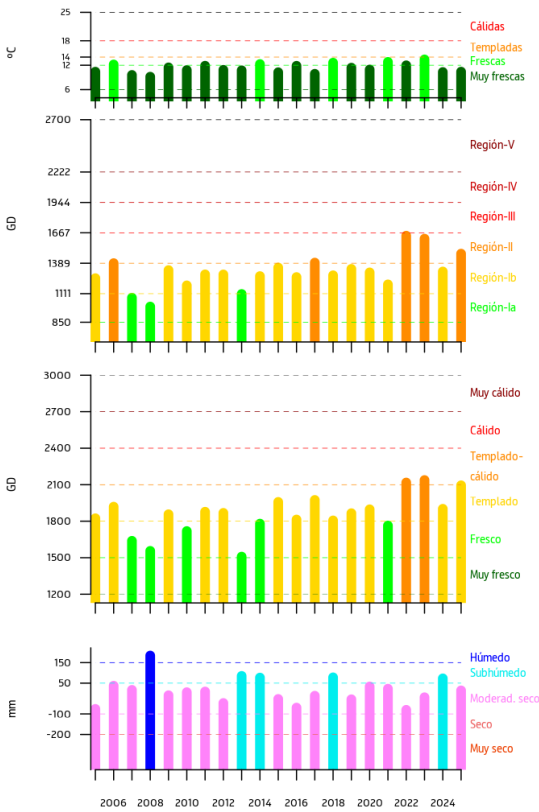
Foncea



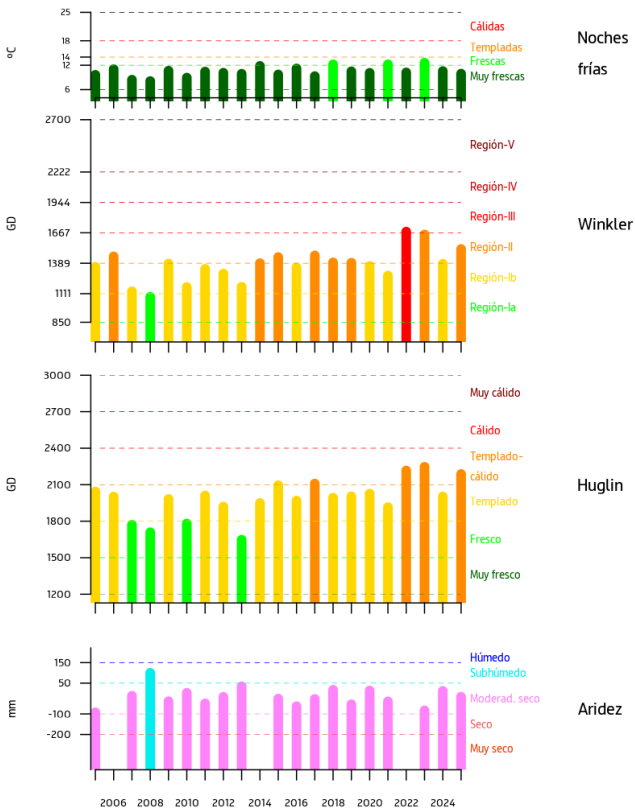
Leiva



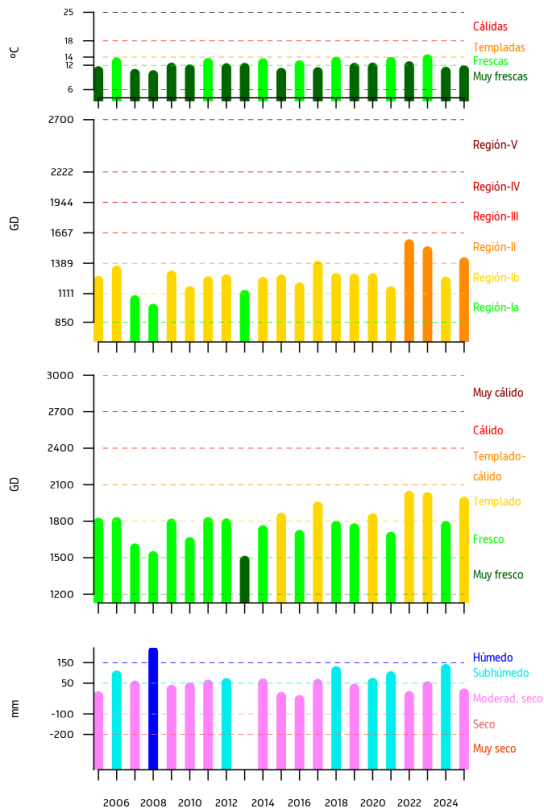
Santo Domingo



Casalarreina



Villar de Torre



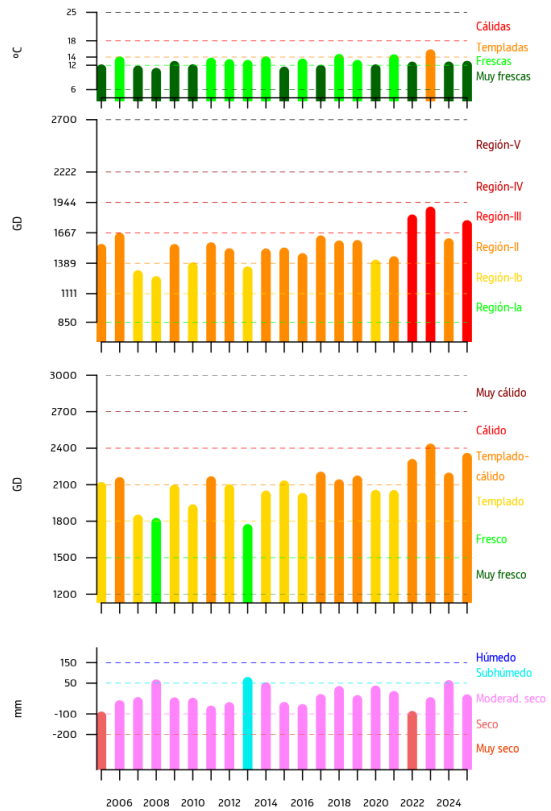
Noches
frías

Winkler

Huglin

Aridez

San Vicente de la Sonsierra



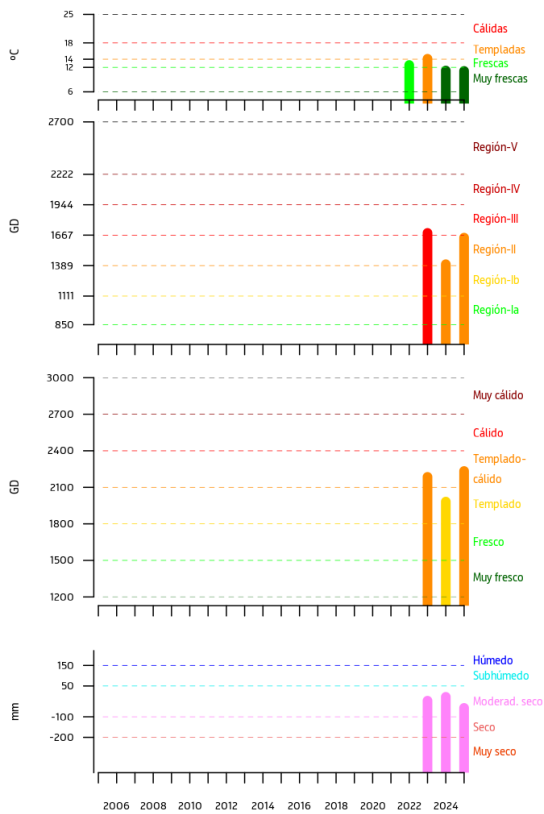
Noches
frías

Winkler

Huglin

Aridez

San Asensio



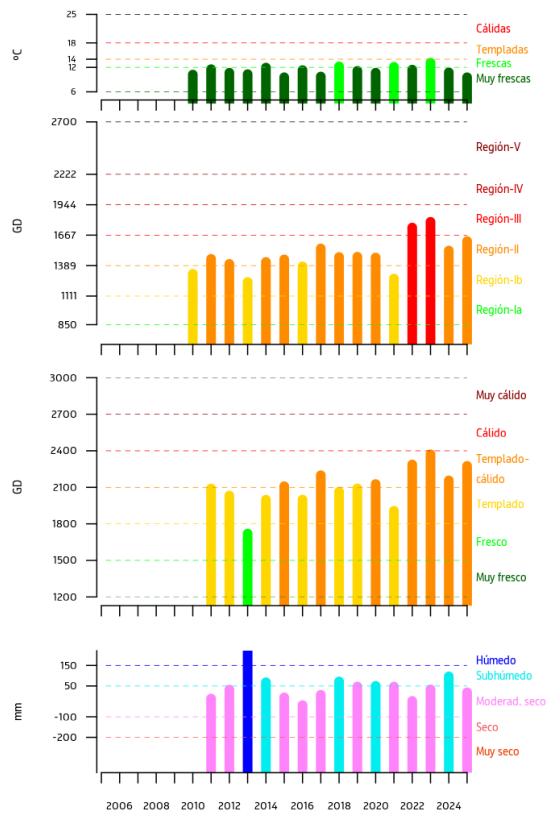
Noches
frías

Winkler

Huglin

Aridez

Arenzana de Abajo



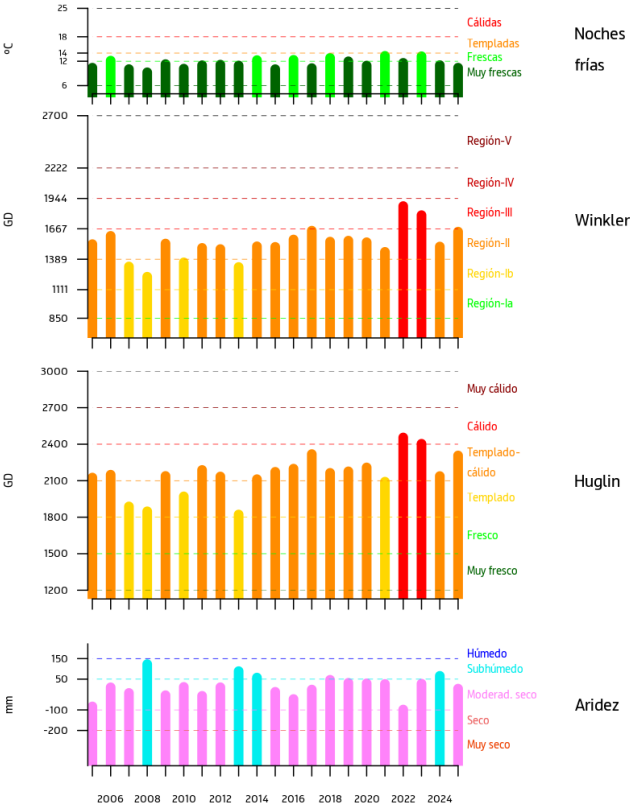
Noches
frías

Winkler

Huglin

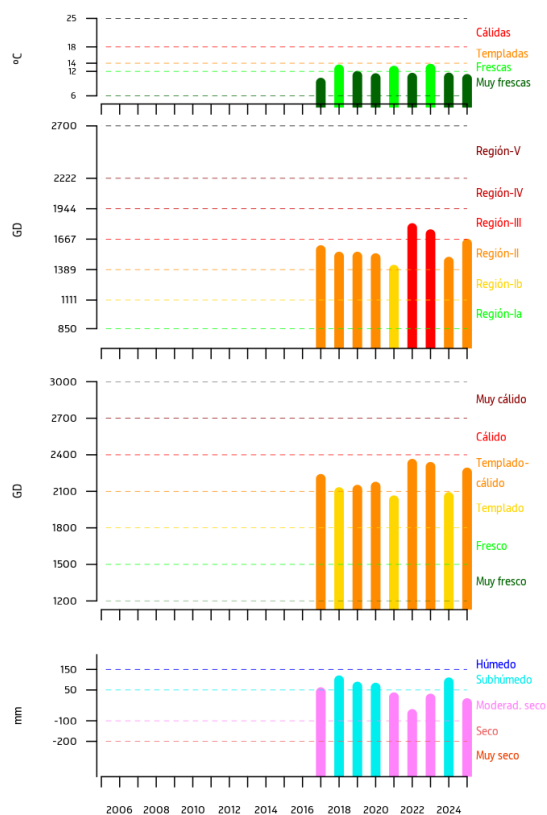
Aridez

Uruñuela



2 Rioja Media

Entrena



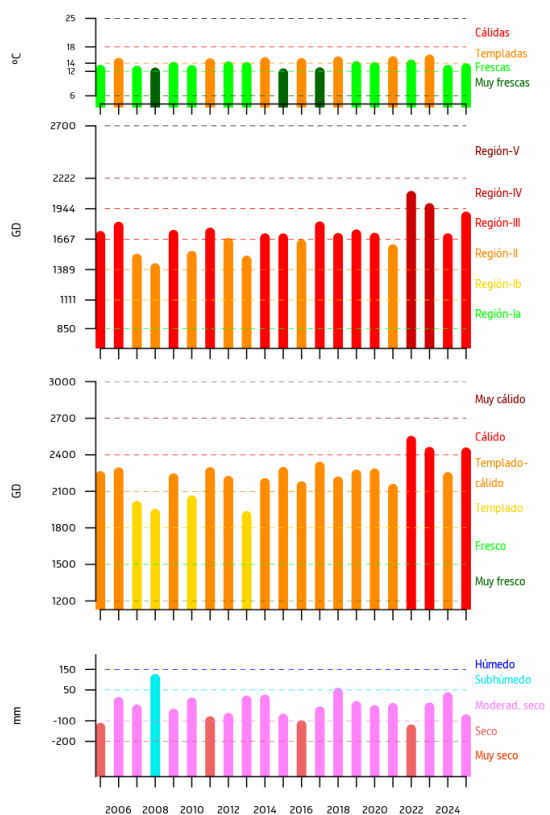
Noches
frías

Winkler

Huglin

Aridez

La Grajera-Logroño



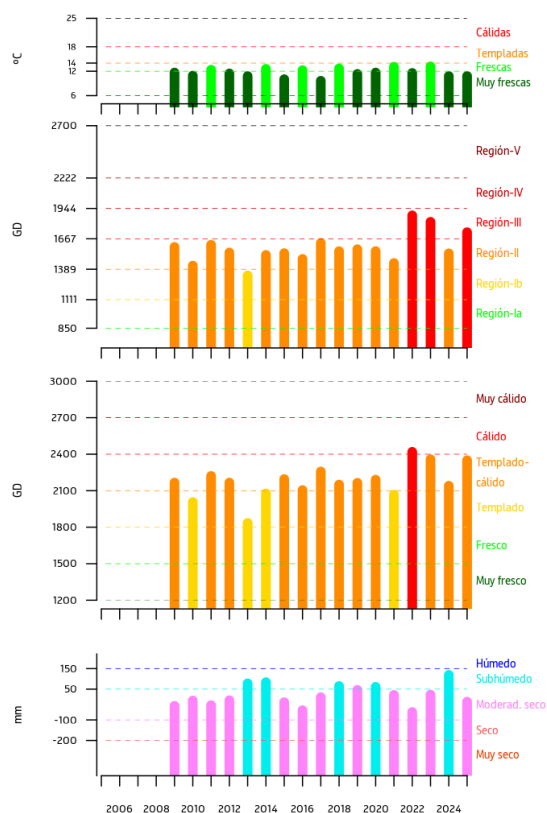
Noches
frías

Winkler

Huglin

Aridez

Albelda de Iregua



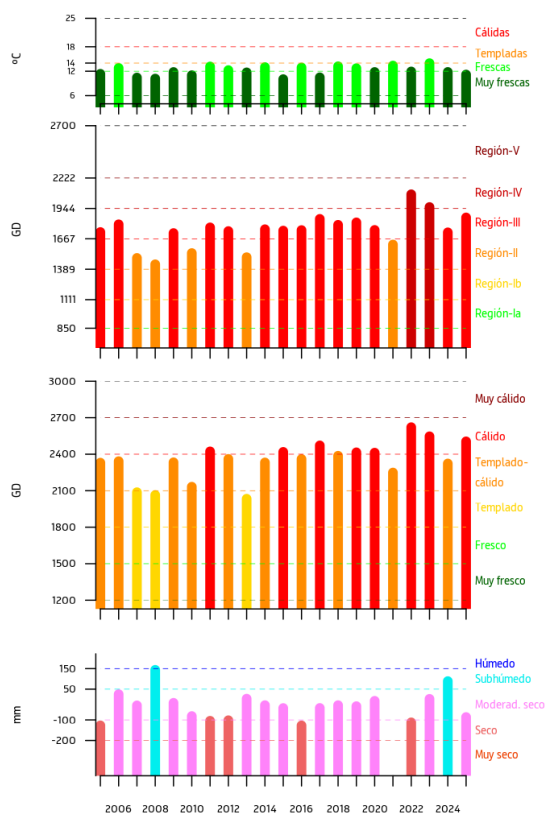
Noches
frías

Winkler

Huglin

Aridez

Valdegón-Agoncillo



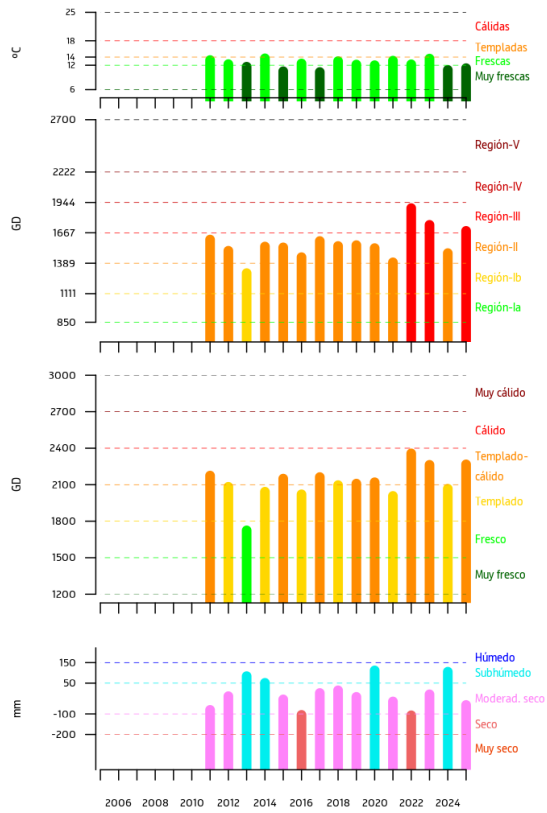
Noches
frías

Winkler

Huglin

Aridez

Santa Engracia del Jubera



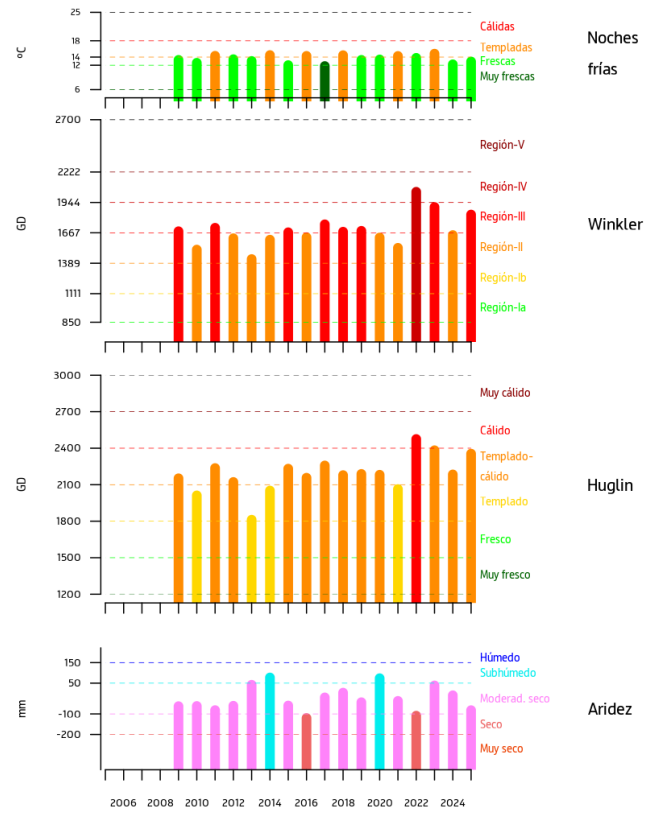
Noches
frías

Winkler

Huglin

Aridez

Ausejo



Noches
frías

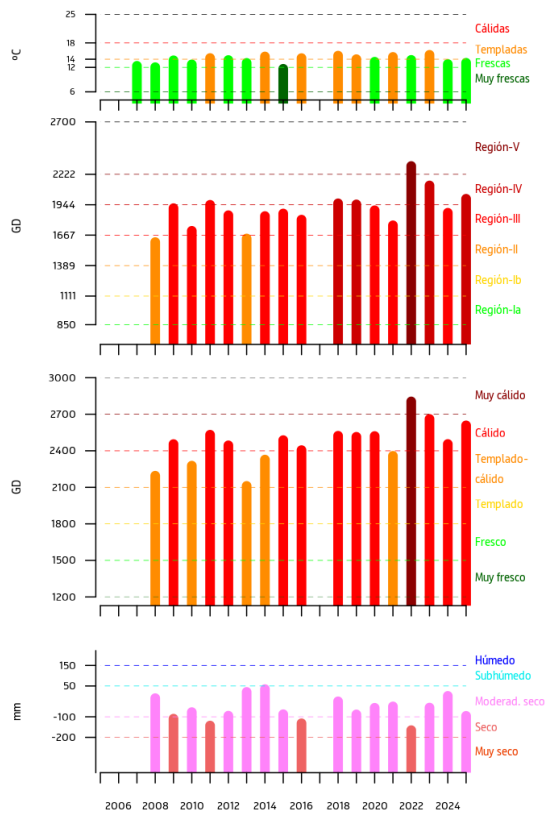
Winkler

Huglin

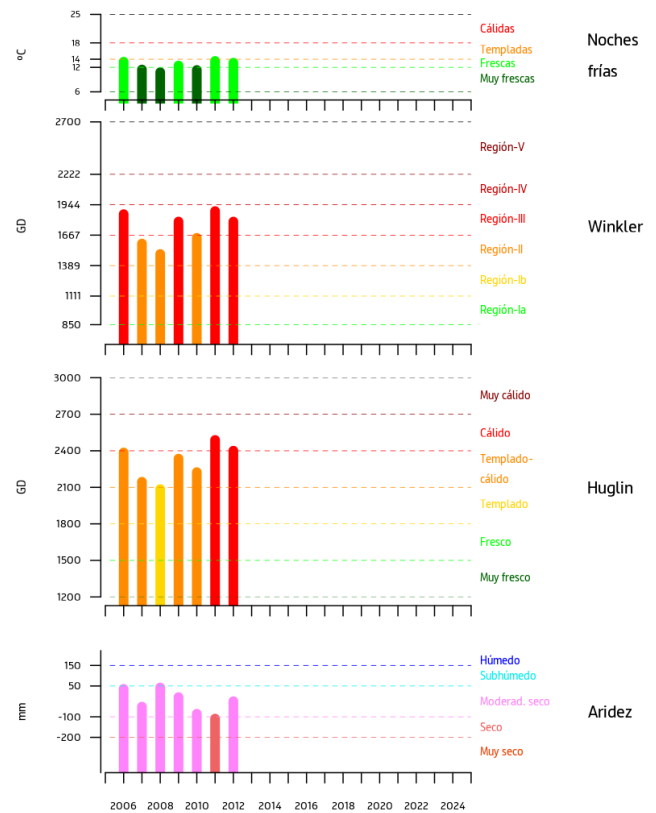
Aridez

3 Rioja Baja

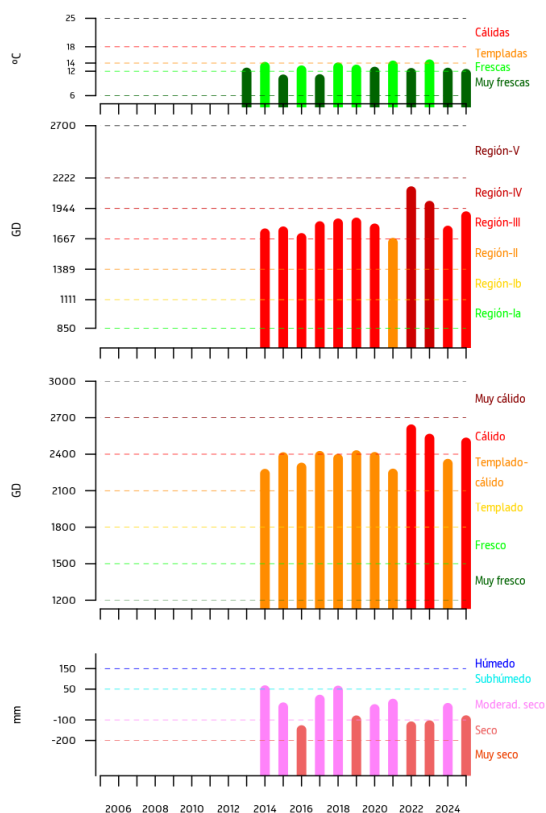
Calahorra



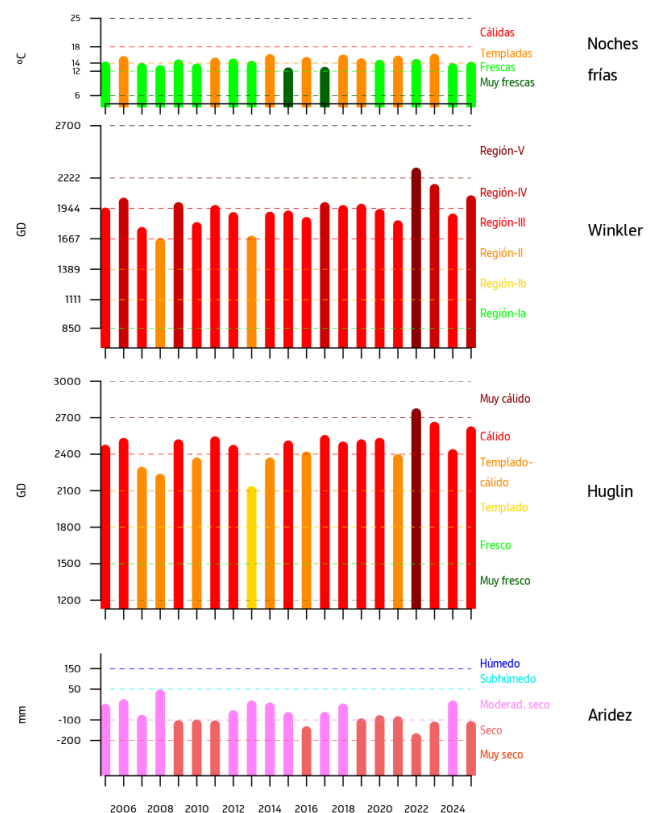
Autol (Fuera de servicio)



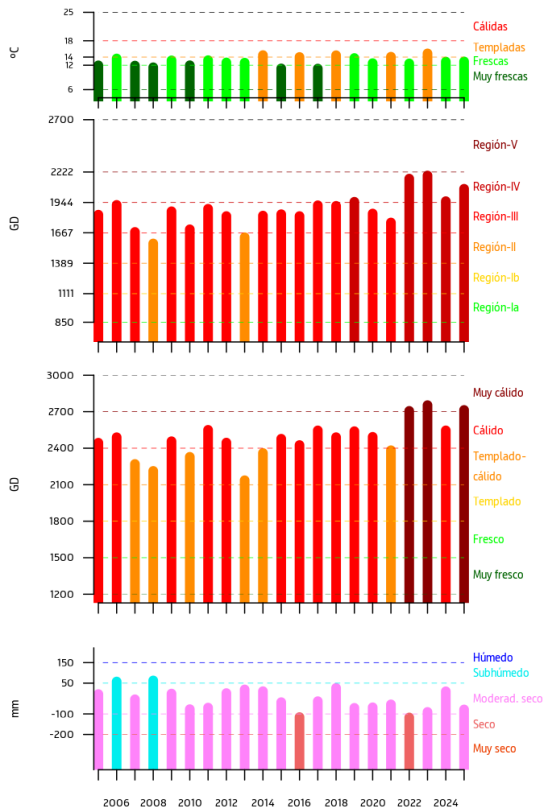
Quel



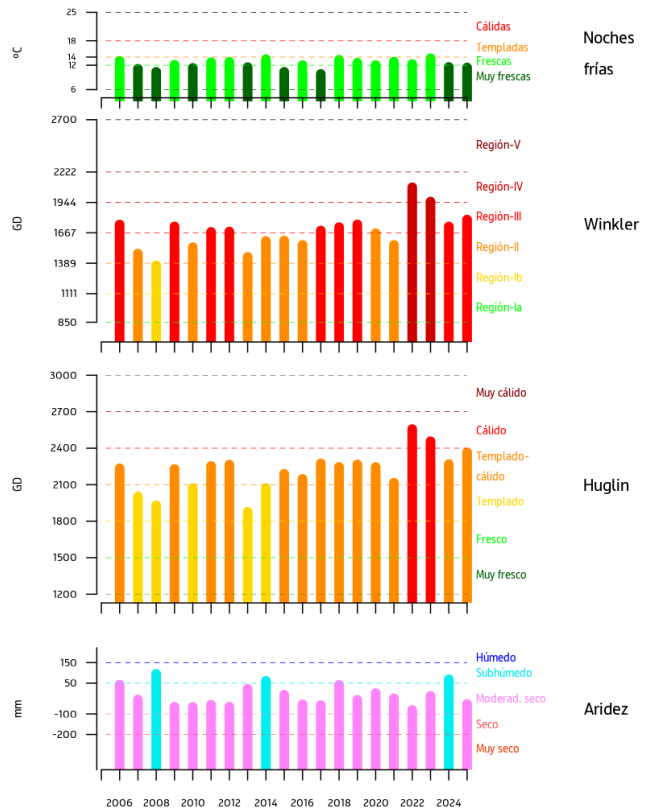
Aldeanueva de Ebro



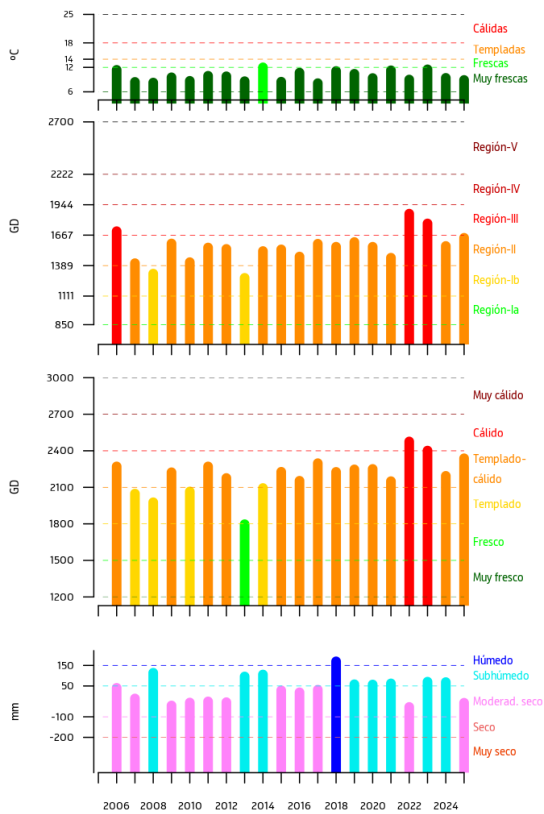
Rincón de Soto



Igea



Cabretón-Cervera



Alfaro

